

State of Wyoming Corner Record

(In compliance with the *CORNER PERPETUATION AND FILING ACT*, Wyoming Statutes, 1997, Section 33-29-140, et. seq., and the Rules and Regulations of the Board of Registration for Professional Engineers and Professional Land Surveyors)

Reverse side of this form may be used if more space is needed.

Record of original survey and citation of source of historical information (if corner is lost or obliterated). Description of corner monumentation evidence found and/or monument and accessories established to perpetuate the location of this corner. Sketch of relative location of monument, accessories, and reference points with course and distance to adjacent corner(s) (if determined in this survey). Method and rationale for reestablishment of lost or obliterated corner.

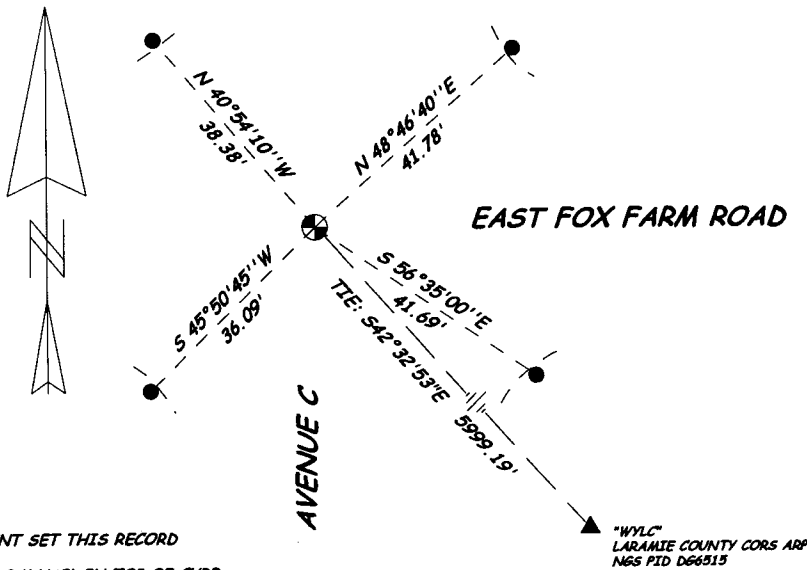
G.L.O. Record: Henry G. Hay, U.S. Deputy Surveyor, August 26, 1870.
80.00 Chains Set Granite Boulder 16 x 9 x 4 for cor to Secs 4,5,8,9

Subsequent Record: Certified Land Corner Recordation form filed March 5, 1982, by Mr. John A. Steil, PLS 2500 indicating a found stove bolt.

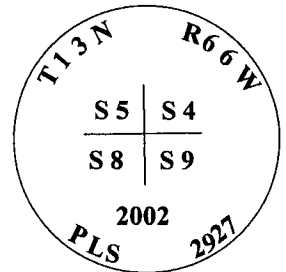
State of Wyoming Corner Record form filed February 7, 1997, by Mr. John A. Steil, PLS 2500 indicating a found stove bolt and remonumenting with a No. 5 x 24" rebar with a marked 2" aluminum cap.

Found: December 22, 1997, a 2" diameter aluminum cap as per State of Wyoming Corner Record form filed February 7, 1997 by Mr. John A. Steil, PLS 2500.

Set: At the request of the Wyoming Department of Transportation' after the completion of intersection improvements in 2002 of Avenue C and East Fox Farm Road, from previous ties utilizing a RTK GPS survey of December 22, 1997, I reset at the 2" diameter aluminum cap position, a No. 5 x 24" rebar with 3 1/4" diameter Brass Cap marked as noted below, 0.04' below the concreted intersection. Set "MAG" p.k. nails in top of curb as references and as noted below in sketch.



Brass Cap Markings



- LEGEND**
- MONUMENT SET THIS RECORD
 - SET MAG P.K. NAIL IN TOP OF CURB

Date of Field Work: June, 2002 / May, 2006

Office Reference: WDOT AVENUE C

CROSS INDEX DIAGRAM

1	2	3	4	5	6	7	8	9	10	11	12	13	14	15	16	17	18	19	20	21	22	23	24	25	
A																									A
B																									B
C		6		5		4		3		2		1													C
D																									D
E																									E
F																									F
G			7		8		9		10		11		12												G
H																									H
J																									J
K																									K
L		18		17		16		15		14		13													L
M																									M
N																									N
O																									O
P			19		20		21		22		23		24												P
Q																									Q
R																									R
S																									S
T		30		29		28		27		26		25													T
U																									U
V																									V
W																									W
X			31		32		33		34		35		36												X
Y																									Y
Z																									Z

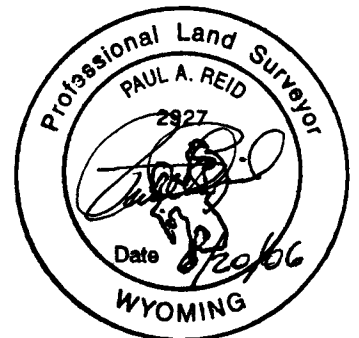
Firm/Agency, Address

Paul A. Reid, PLS
1533 Pinion Drive
Cheyenne WY 82001

307.637.3400 Home
307.630.2387 Cell

This corner record was prepared by me or under my direction and supervision.

SEAL & SIGNATURE



RECORDED 6/20/2006 AT 4:04 PM REC# 449955 BK# 1954 PG# 1553
DEBRA K. LATHROP, CLERK OF LARAMIE COUNTY, WY PAGE 1 OF 1

Corner Name: Northwest Corner Section: 9 T.13N., R.66W., 6th P.M.,
SBRPEPLS/PLSW: MARCH 1994/97

Cross-Index No.: E - 9